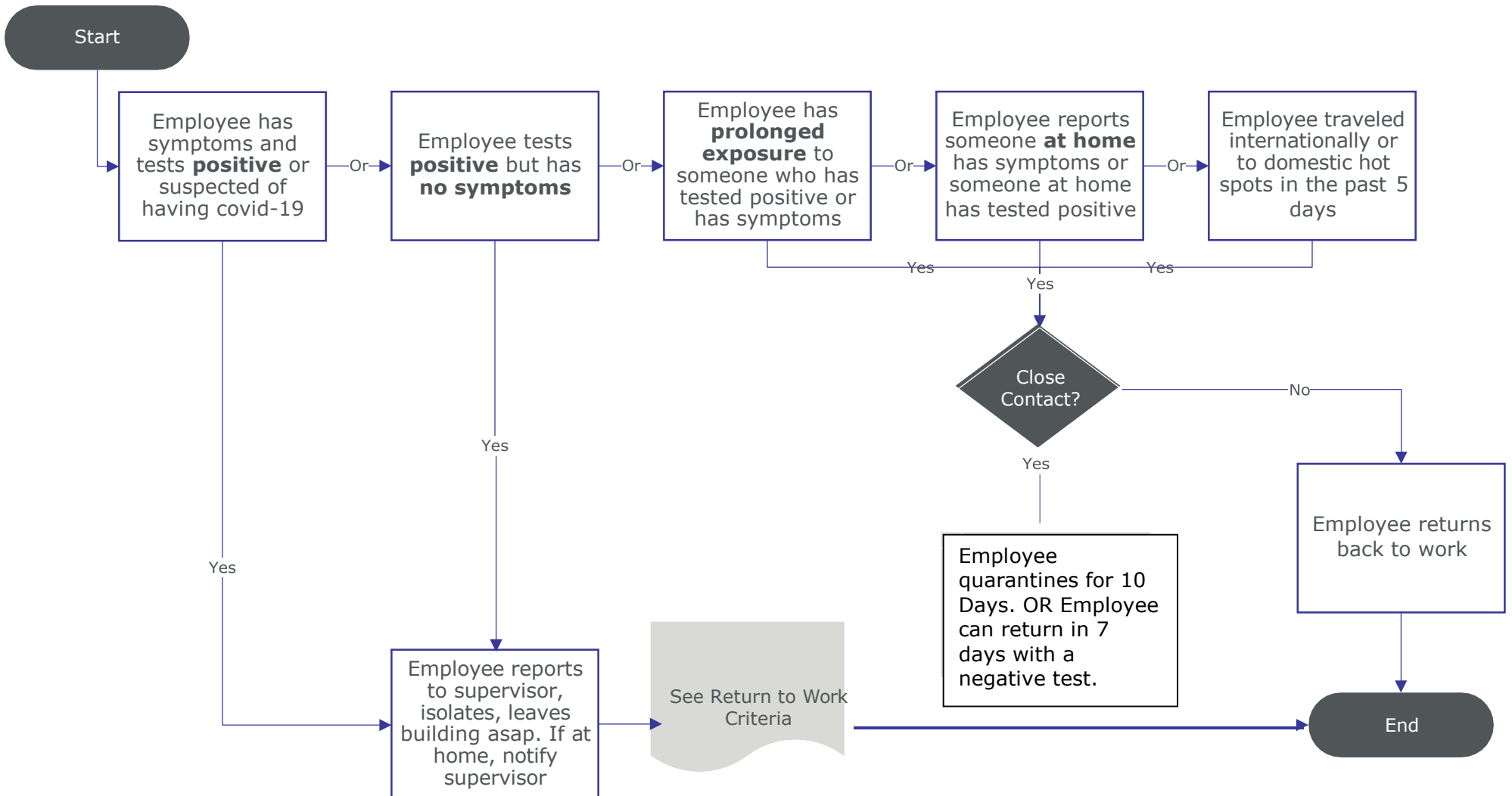


Joaquin ISD Employee/Workplace Flowchart for COVID-19

To be considered exposed to COVID-19, you need to have prolonged close contact with a person who has the virus. Close contact is defined as being directly exposed to infectious secretions (e.g., being coughed on) or being within 6 feet for a cumulative duration of 15 minutes. If either occurred at any time in the last 14 days at the same time the infected individual was infectious.



RETURN TO WORK CRITERIA

- At least 24 hours have passed since recovery (no fever without the use of fever-reducing medications)
- You have improved in respiratory symptoms (cough, shortness of breath, etc.)
- At least 10 days have passed since symptoms first occurred

IMPORTANT INFORMATION

- Determine last date employee was physically present at school, the time the employee was within six feet or less of another individual
- Determine all areas that may have been exposed within the past 72 hours
- Close off areas used by employee
- Disinfecting protocols
- Determine additional closure response and communication if positive

SYMPTOMS OF COVID-19

People with these symptoms may have COVID-19:

- Temperature of 100.4 degrees Fahrenheit or higher when taken by mouth
- Sore throat
- New uncontrolled cough that causes difficulty breathing (or, for employees with a chronic allergic/asthmatic cough, a change in their cough from baseline)
- Diarrhea, vomiting, or abdominal pain
- New onset of severe headache, especially with a fever